



TECHNICAL DATA SHEET

PRODUCT INFO

PRODUCT NAME

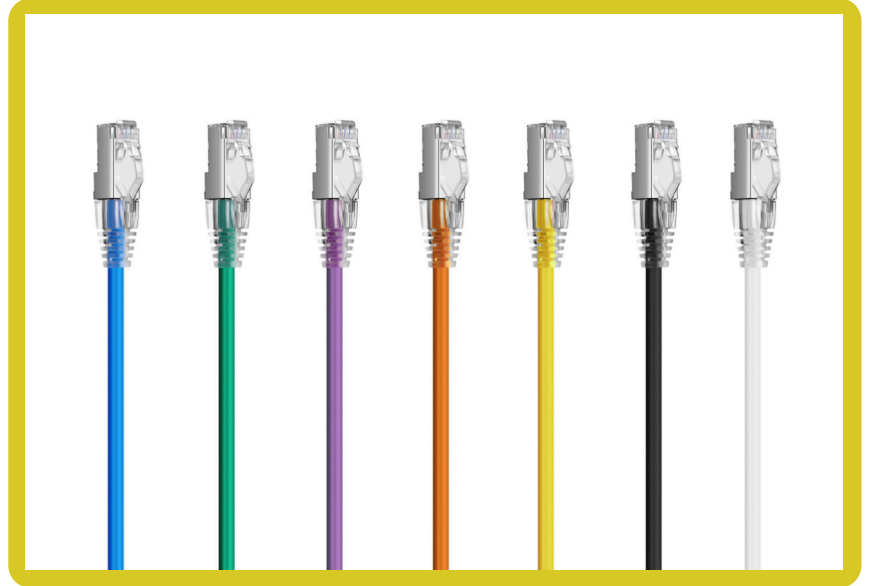
CAT6A THIN 28AWG S/FTP (5MM)

PRODUCT CODE

LS-GNC6A28

PRODUCT CATEGORY

Cat6A 28AWG



APPLICATIONS

Data Centers: Suitable for use in data centers where high-density networking and flexibility are essential.

Office Environments: Ideal for office networks requiring reliable performance and space-saving solutions.

Industrial Settings: Suitable for industrial Ethernet applications where electromagnetic interference may be a concern.

Educational Institutions: Provides reliable connectivity for campus-wide networks, ensuring stable data transmission.

GROVE CAT6A THIN PATCH LEAD

The GROVE Cat6A Thin 28AWG S/FTP Patch Lead (5mm) stands out as an ideal choice for demanding networking environments. Its 28AWG construction offers enhanced flexibility and reduced bulk, making it easier to manage in tight spaces. Shielded with S/FTP (Shielded Foiled Twisted Pair) technology, this cable effectively minimizes electromagnetic interference, ensuring reliable data transmission even in high-density networking scenarios.

Compliant with Australian Fire rated standards, the cable prioritizes safety, providing peace of mind in critical installations. Its distinctive color simplifies identification in complex network setups, facilitating efficient management and troubleshooting. The patch lead format allows for quick and secure connections between various network devices, supporting seamless operations and maintenance.

Overall, the GROVE Cat6A Thin 28AWG S/FTP Patch Lead (5mm) combines superior performance, safety features, and ease of use, making it a reliable choice for high-performance networking applications.



CONTACT US

1300 732 254

sales@grovecoms.net.au

www.grovecoms.com.au

Unit 3 & 4 / 15 Drake Street, Osborne Park WA 6017

KEY FEATURES PRODUCT

SLIM DESIGN

Utilizes 28AW construction for enhanced flexibility and reduced bulk, ideal for installations where space is limited.

SHIELDED CONSTRUCTION

Features S/FTP (Shielded Foiled Twisted Pair) shielding to minimize electromagnetic interference (EMI), ensuring stable and reliable data transmission.

COMPLIANCE

Meets Australian Fire rated standards, ensuring safety in installations where fire safety regulations are stringent.

DISTINCTIVE COLOUR

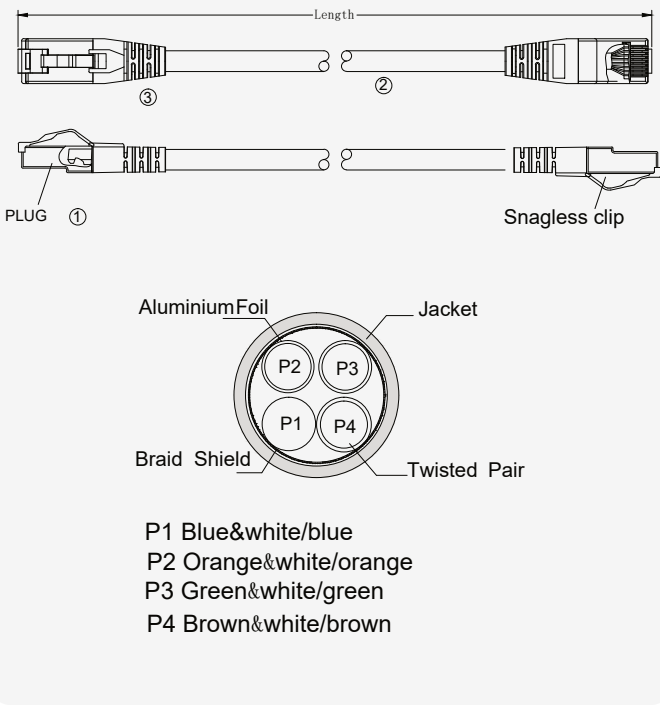
Designed with a distinctive color for easy identification, simplifying network management and troubleshooting.

ENHANCED CROSSTALK AND NOISE SPECIFICATIONS

CAT6A patch leads feature rigorous crosstalk and noise specifications, ideal for Fast Ethernet, Gigabit Ethernet, and 10-Gigabit Ethernet applications.

UNIQUE

Snagless clip design



TECHNICAL DATA SPECIFICATION

Cable Type	CAT6A (Category 6A)
Conductor Size	28AWG (American Wire Gauge)
Shielding	S/FTP (Shielded Foiled Twisted Pair)
Outer Diameter	5mm
Gold Plated Connectors	50 micron
Compliance	The Low Smoke Zero Halogen (LSZH / LS0H Jacket) meets Australian Fire Rated Standards All GROVE network CAT6A patch leads undergo Fluke testing, ensuring a reliable and high performance connectivity experience
Colour	
Length	150mm, 200mm, 280mm, 0.5m, 1m, 1.5m, 2m, 3m, 5m

INSTALLATION GUIDELINES

Ensure proper grounding and shielding to maximize the effectiveness of S/FTP shielding against EMI.

Follow industry-standard practices for cable management and routing to prevent damage and ensure optimal performance.

Verify compatibility with Cat6A compliant equipment and infrastructure to achieve maximum performance.