



TECHNICAL DATA SHEET

PRODUCT INFO

PRODUCT NAME

GROVE CAT6 8 PAIR CONSOLIDATION MODULE

PRODUCT CODE

CV-GNNSA-10290-8P

PRODUCT CATEGORY

CAT6 - (DATA)



GROVE CAT6 8 PAIR CONSOLIDATION MODULE

The GROVE 8 pair consolidation disconnection module is suitable for use as part of a Category 5E/Cat6 consolidation point, using backmount type mounting frames or Profil-type rods. Each module can join 2 standard cables.

APPLICATIONS

Structured Cabling Systems:

- Ideal for deploying structured cabling systems in offices, data centers, and residential buildings.
- Supports the organization and management of high-density network connections.

Network Expansion and Upgrades:

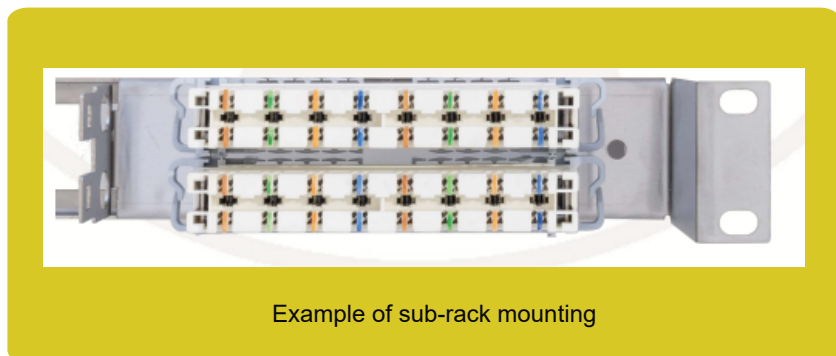
- Suitable for upgrading existing networks to CAT6 standards for improved performance and bandwidth.
- Facilitates the expansion of network capacity to meet growing demands.

Industrial and Commercial Environments:

- Used in various industrial applications where reliable and high-performance networking is crucial.
- Supports Ethernet-based communication systems in manufacturing plants, warehouses, and distribution centers.

Residential Networking:

- Provides a robust solution for home networking, ensuring reliable connectivity for multimedia streaming, gaming, and home automation.



Example of sub-rack mounting



CONTACT US

1300 732 254

sales@grovecoms.net.au

www.grovecoms.com.au

Unit 3 & 4 / 15 Drake Street, Osborne Park WA 6017

KEY FEATURES PRODUCT

CONSOLIDATION AND ORGANISATION

- Enables consolidation of multiple CAT6 cables into a structured, manageable form.
- Helps maintain organised cabling infrastructure, reducing clutter and simplifying troubleshooting.

FLEXIBILITY AND SCALABILITY

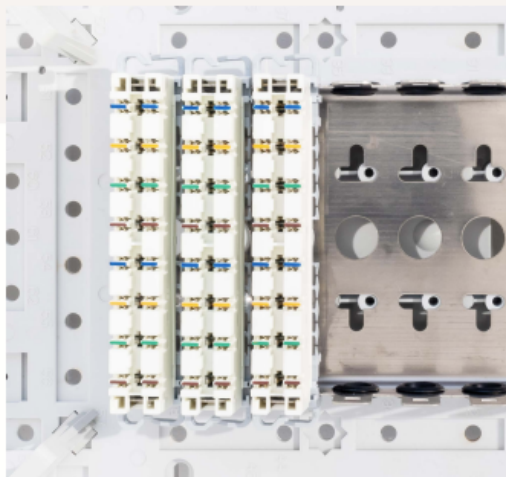
- Allows for future expansion or reconfiguration of network connections without major infrastructure changes.
- Supports flexible deployment scenarios in residential, commercial, and industrial settings.

COMPATIBILITY AND INTEROPERABILITY

- Compatible with a wide range of CAT6 compliant equipment including switches, routers and patch panels.
- Interoperable with existing CAT5e and CAT6 infrastructure, facilitating seamless integration.

EASE OF INSTALLATION

- Modular design simplifies installation and maintenance tasks.
- Supports quick and straightforward termination of cables, minimizing installation time.



Example of installation in connection box

TECHNICAL DATA SPECIFICATION

Category and Compatibility:

- CAT6 compliant, suitable for Gigabit Ethernet and other high-speed applications.
- Compatible with CAT5e and lower categories for backward compatibility.

Pair Configuration:

- Supports 8 pairs of conductors, allowing for comprehensive network configurations.

Termination:

- Designed for easy termination of CAT6 cables using industry-standard practices (e.g., T568A/B wiring schemes).

Module Design:

- Compact form factor suitable for installation in standard network enclosures and racks.
- Typically snap-in or modular design for easy installation and maintenance.

Performance:

- Provides excellent transmission performance up to 250 MHz.
- Low crosstalk and interference for reliable data transmission.

Material and Durability:

- Constructed from durable materials ensuring longevity and robustness in various environments.
- Designed to meet or exceed industry standards for reliability and performance.